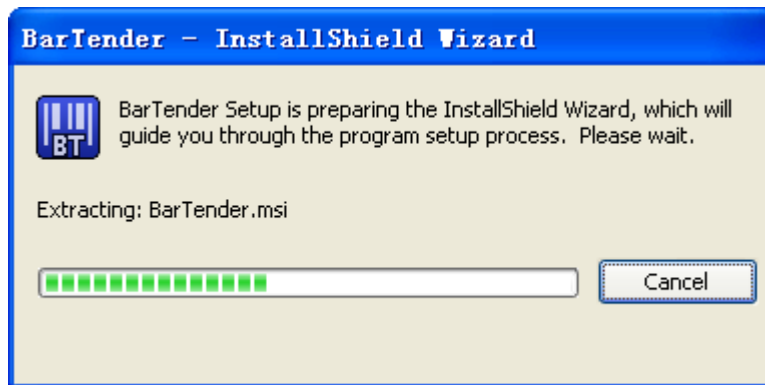
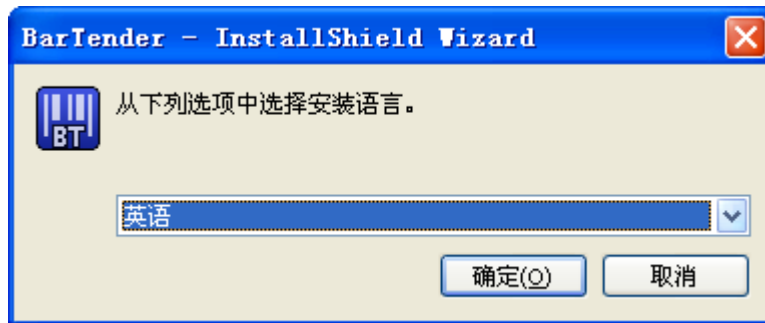
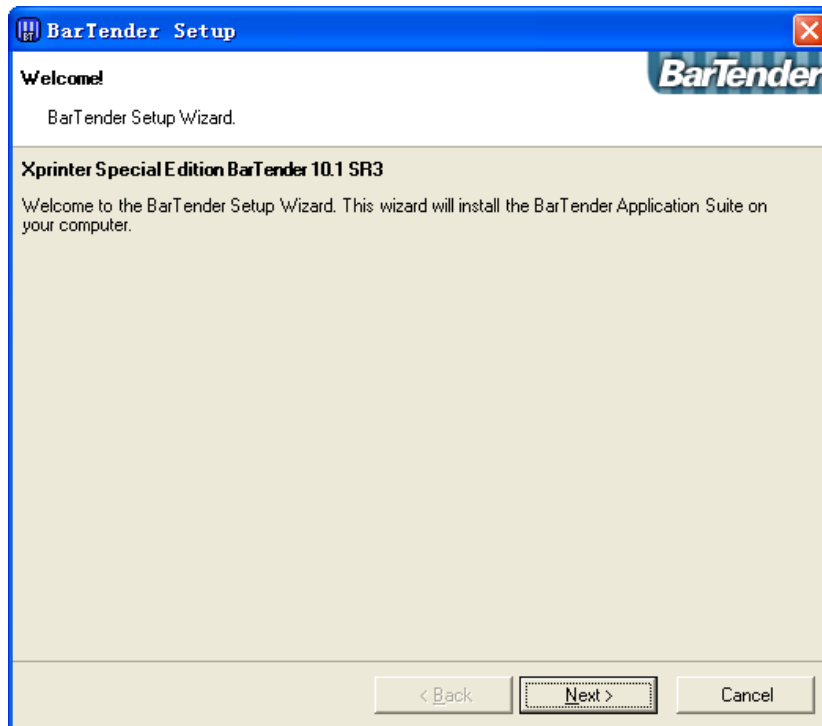


Xprinter Special Edition Ultra Lite

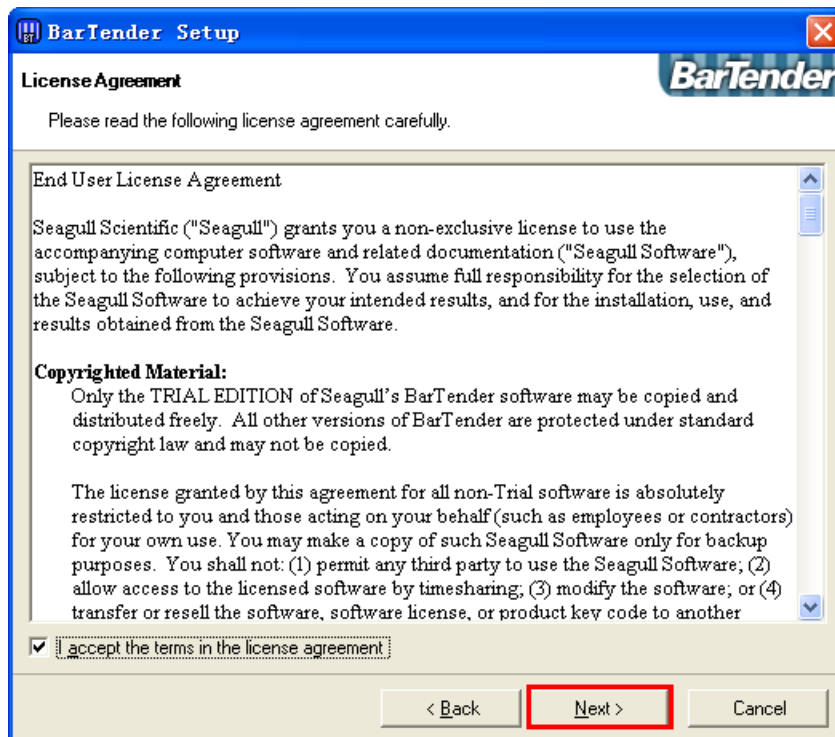
1. Open CD, double click  



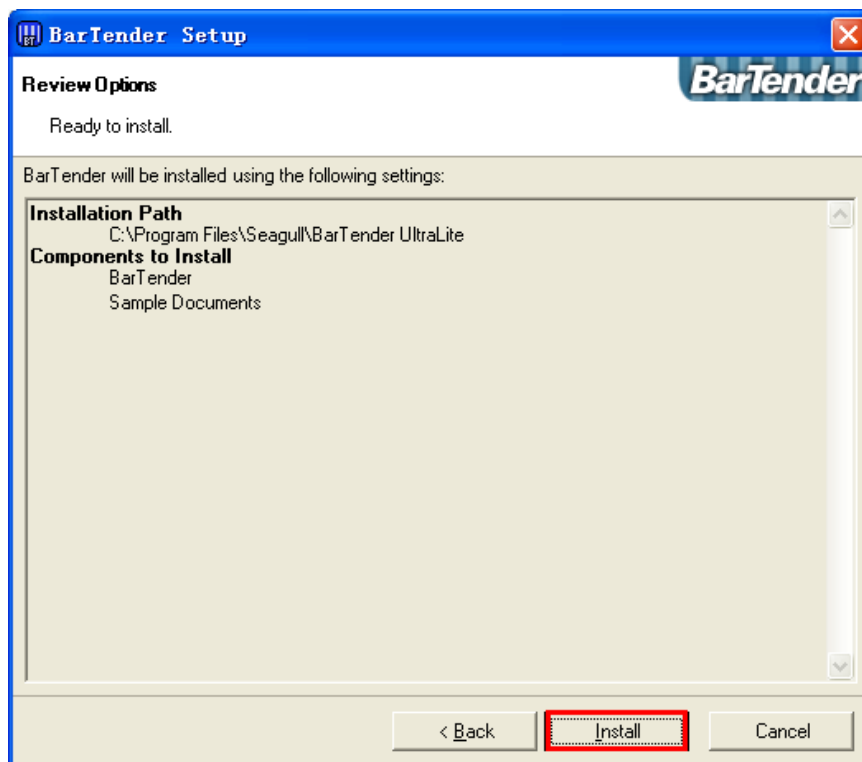
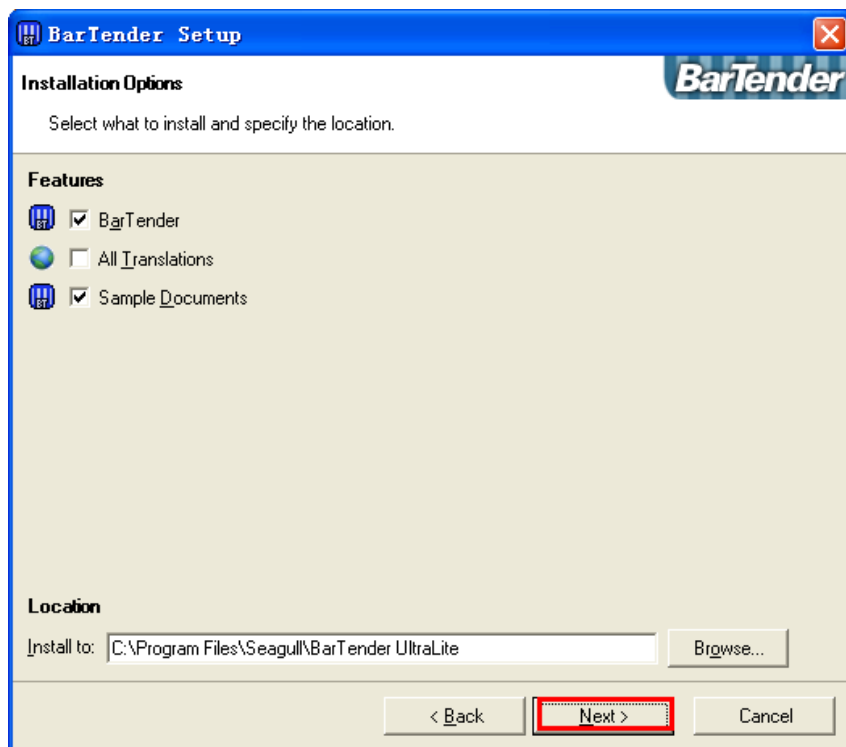
2. Follow next step

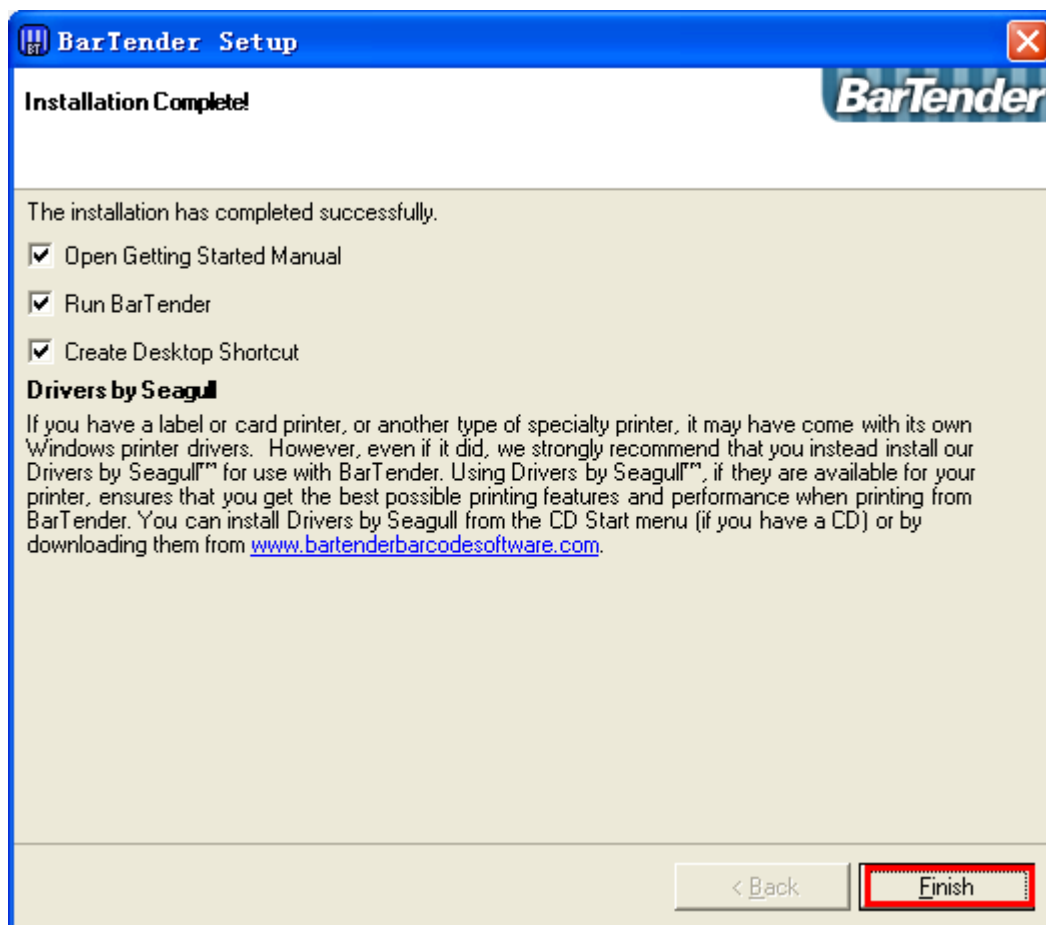
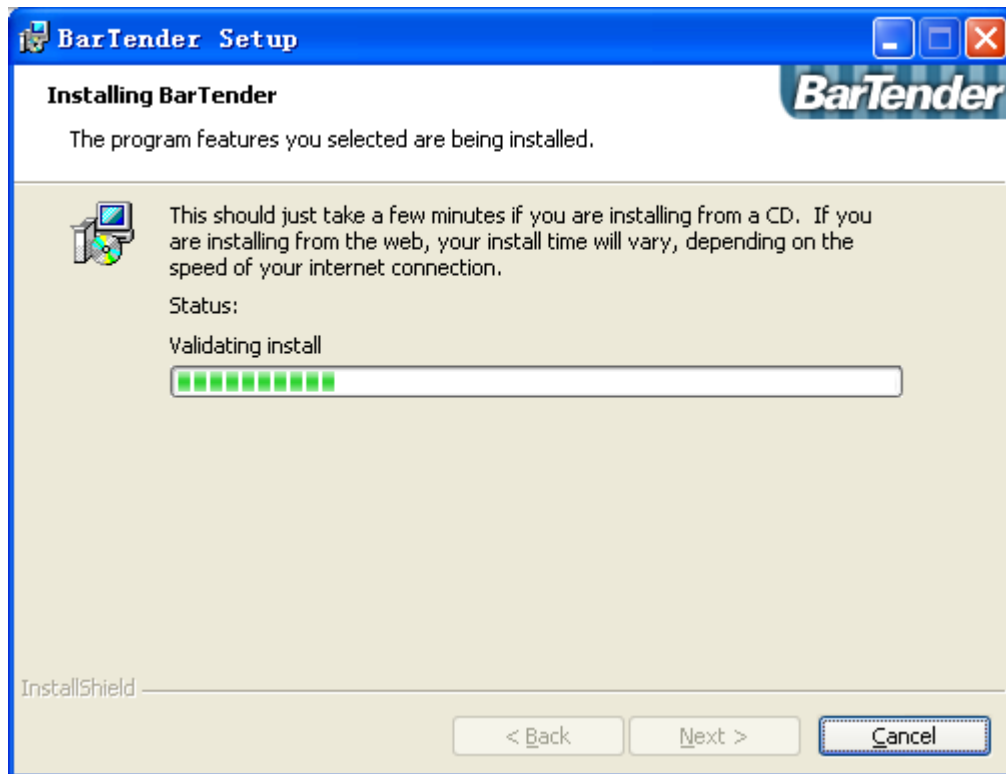


3. Accept the agreement— next step

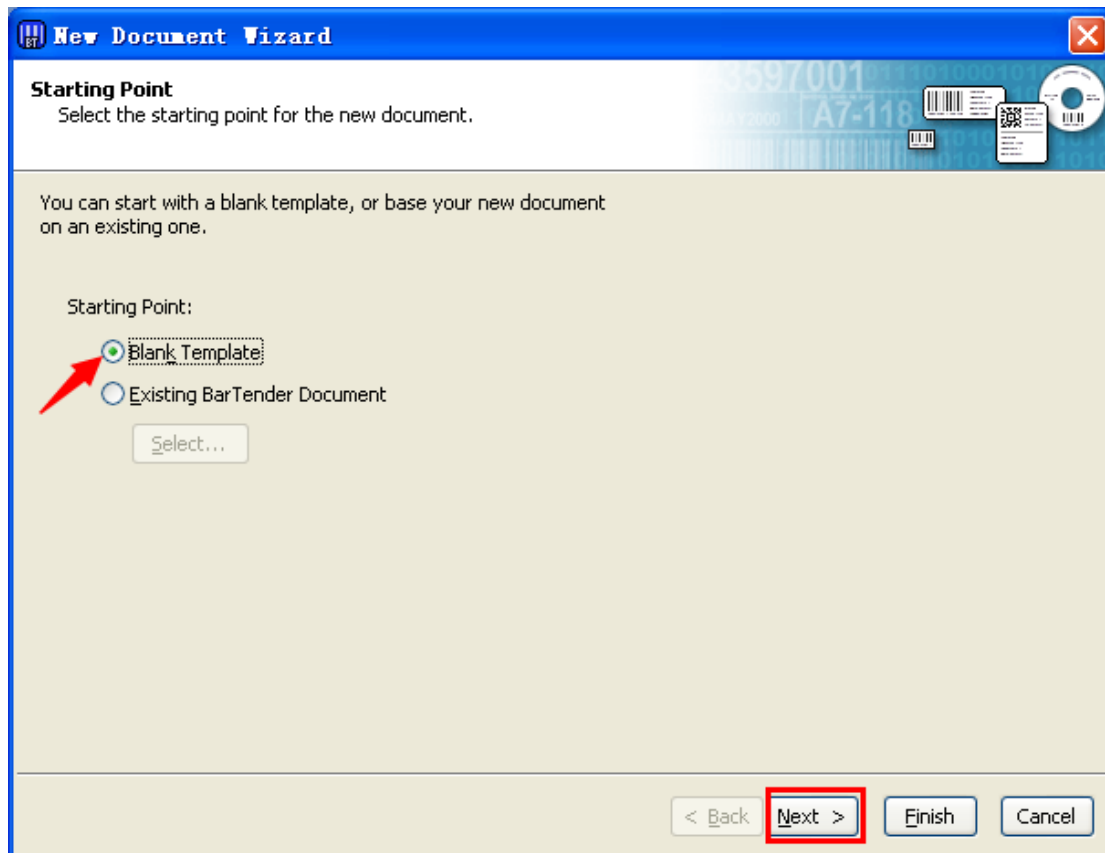


4. Select the installation path, next step





5.Installation completed, operate software, base your new template.



New Document Wizard

Starting Point
Select the starting point for the new document.

You can start with a blank template, or base your new document on an existing one.

Starting Point:

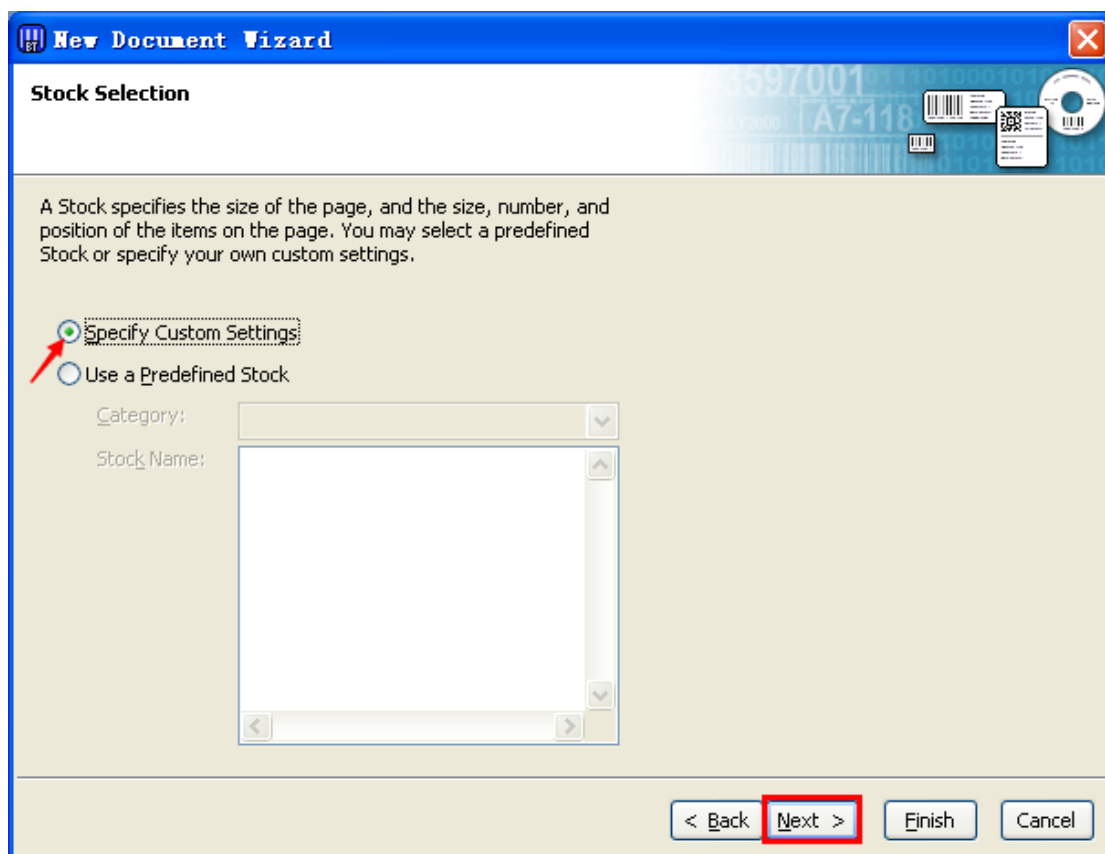
☒ Blank Template

☐ Existing BarTender Document

Select...

< Back **Next >** Finish Cancel

The 'New Document Wizard' window is titled 'New Document Wizard' with a blue header bar. The main area is titled 'Starting Point' and contains instructions: 'Select the starting point for the new document.' and 'You can start with a blank template, or base your new document on an existing one.' There are two radio buttons: 'Blank Template' (selected, indicated by a red arrow) and 'Existing BarTender Document'. Below the radio buttons is a 'Select...' button. At the bottom right, there are four buttons: '< Back', 'Next >' (highlighted with a red box), 'Finish', and 'Cancel'.



New Document Wizard

Stock Selection

A Stock specifies the size of the page, and the size, number, and position of the items on the page. You may select a predefined Stock or specify your own custom settings.

☒ Specify Custom Settings:


☐ Use a Predefined Stock


Category: [Dropdown]

Stock Name: [Text Area]


< Back **Next >** Finish Cancel

The 'New Document Wizard' window is titled 'New Document Wizard' with a blue header bar. The main area is titled 'Stock Selection' and contains instructions: 'A Stock specifies the size of the page, and the size, number, and position of the items on the page. You may select a predefined Stock or specify your own custom settings.' There are two radio buttons: 'Specify Custom Settings:' (selected, indicated by a red arrow) and 'Use a Predefined Stock'. Below the radio buttons are two input fields: 'Category:' with a dropdown arrow and 'Stock Name:' with a large text area. At the bottom right, there are four buttons: '< Back', 'Next >' (highlighted with a red box), 'Finish', and 'Cancel'.

 **New Document Wizard**



Items Per Page
Specify the characteristics of your media.



Most media has only a single item (label, card, tag, etc.) per page of stock.
Some media, however, are more complex and have multiple items on a page.

☒ Single item per page

☐ Multiple columns and/or rows of items per page

Rows:

Columns:

< Back

Next >

Finish

Cancel

Notes: Specify the characteristics of the sides of your media.

New Document Wizard

Side Edges
Specify the characteristics of the sides of your media.

Does your stock have a small amount of unused material between the edge of the item and the edge of the page?

☒ Yes, it does have some unused material on the sides

☐ No, it does not

Width of Unused Area:

Left: 1.3 mm

Right: 1.3 mm

Preview:

Template Size: 40 x 30 mm

< Back Next > Finish Cancel

New Document Wizard

Printed Item Shape
Specify the shape of your items.

☐ Rectangle

☒ Rounded Rectangle

☐ Ellipse

☐ Circle

Preview:

Template Size: 40 x 30 mm

< Back Next > Finish Cancel

New Document Wizard

Template Size
Specify the size of your item.

Template Size: User Defined Size

Width: 40.0 mm Height: 30.0 mm

Note: Do not include any of the unused area surrounding the item.

Orientation

- ☒ Portrait
- ☐ Landscape
- ☐ Portrait 180
- ☐ Landscape 180

Effects

- ☐ Mirror Image
- ☐ Negative

Preview:

Template Size: 40 x 30 mm

< Back **Next >** Finish Cancel

New Document Wizard

Template Background
Select a picture or color for your background.

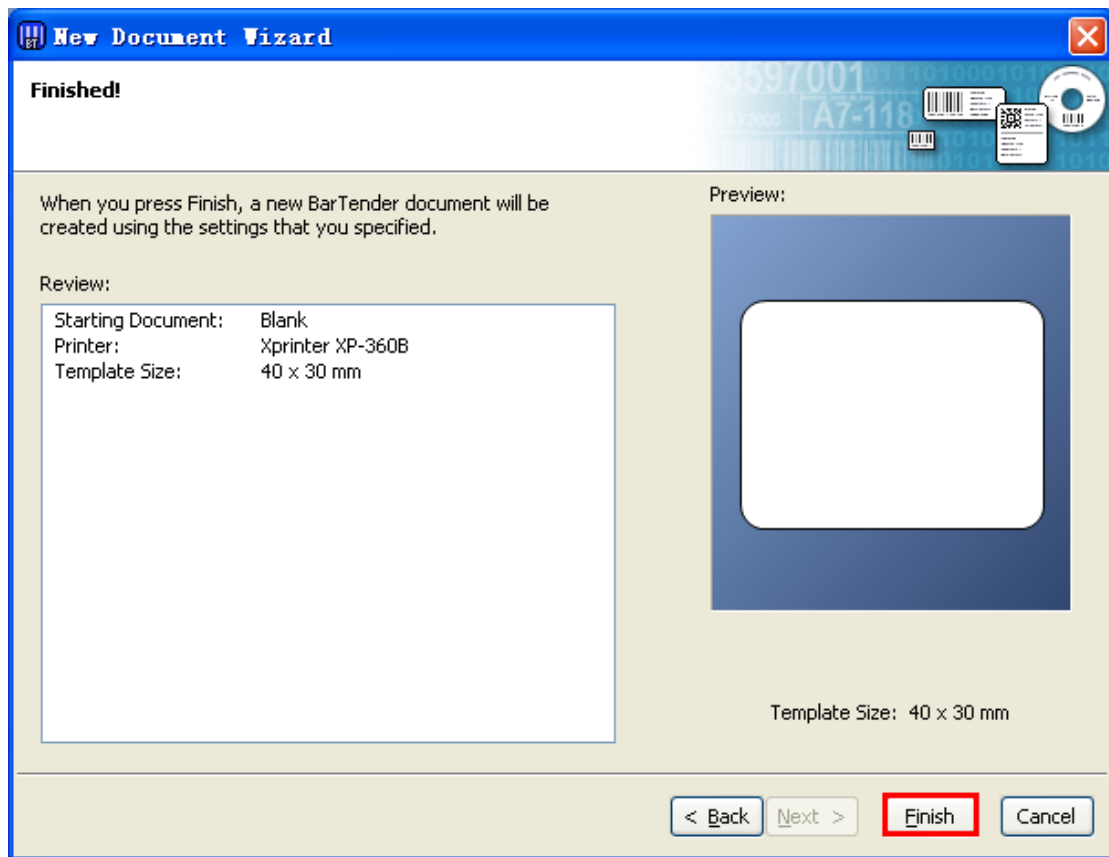
Background Features

- ☒ Color
Allows you to specify a fill color to use for the background.
- ☐ Picture
Allows you to use a picture for the background.
- ☐ Template Image
Allows you to display a picture of what you want your completed design to look like behind the design area. You can then design on top of that picture, making it easier to position and size objects.

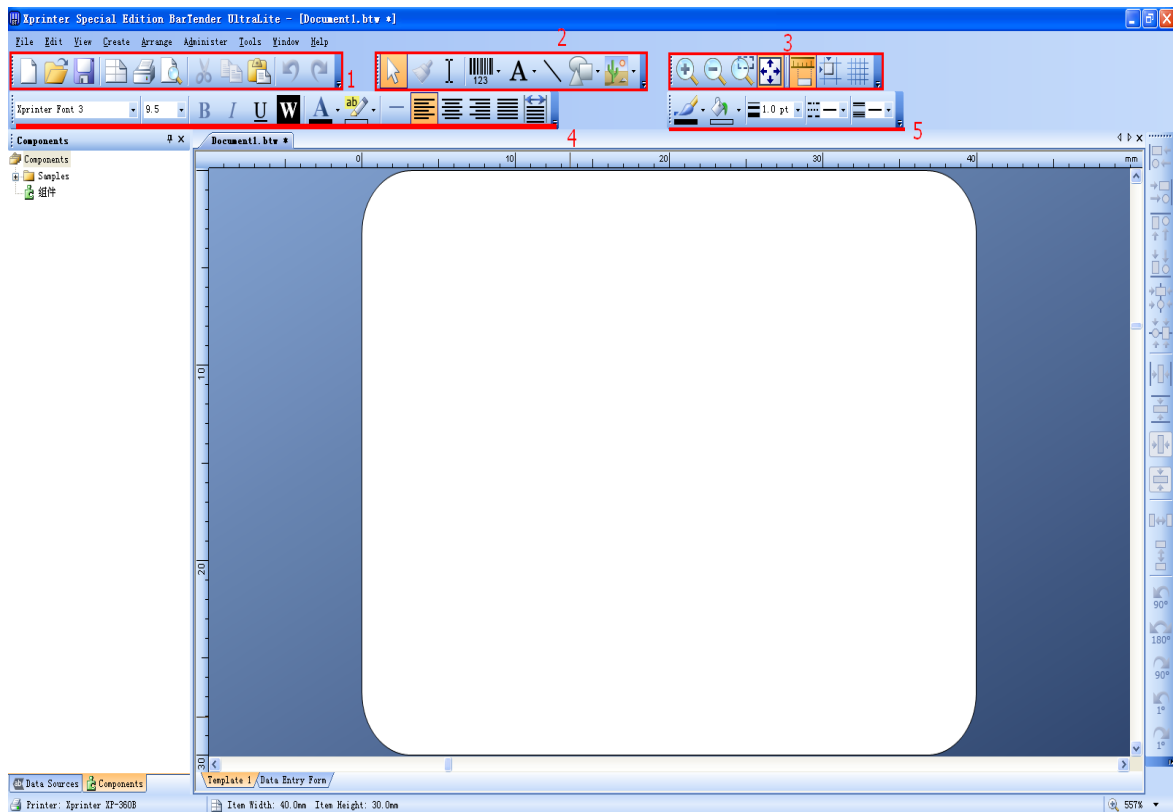
Preview:

Template Size: 40 x 30 mm

< Back **Next >** Finish Cancel



6.Template finish, software edit.



Tools: create, save, print

① **.Object:** barcode, text, shortcut

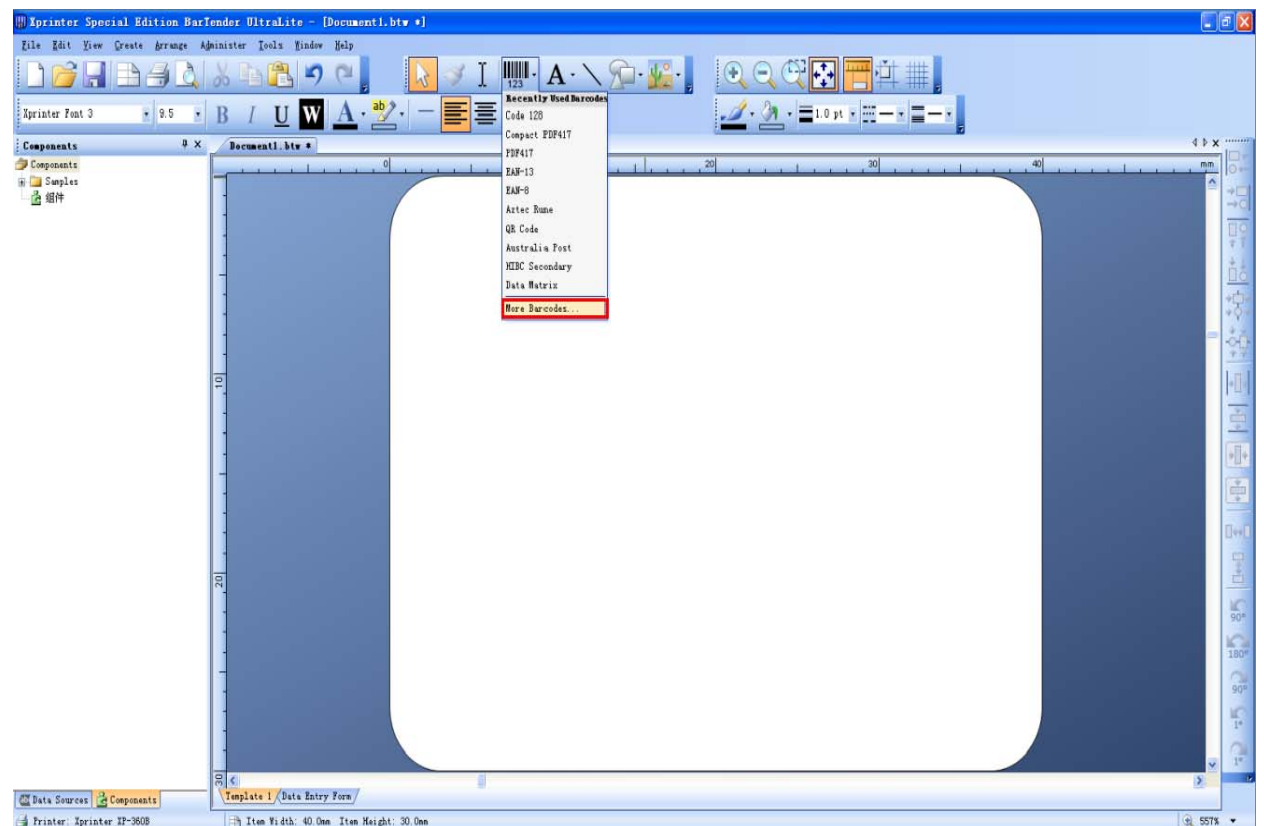
② **.view:** enlarge, narrow, centered

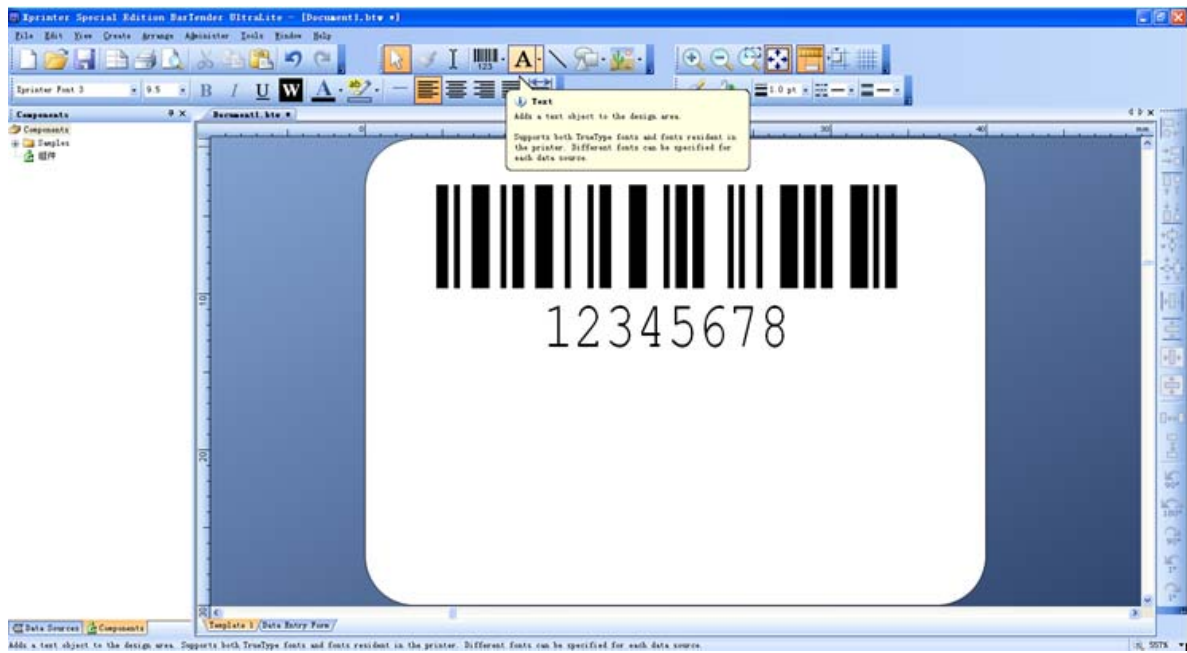
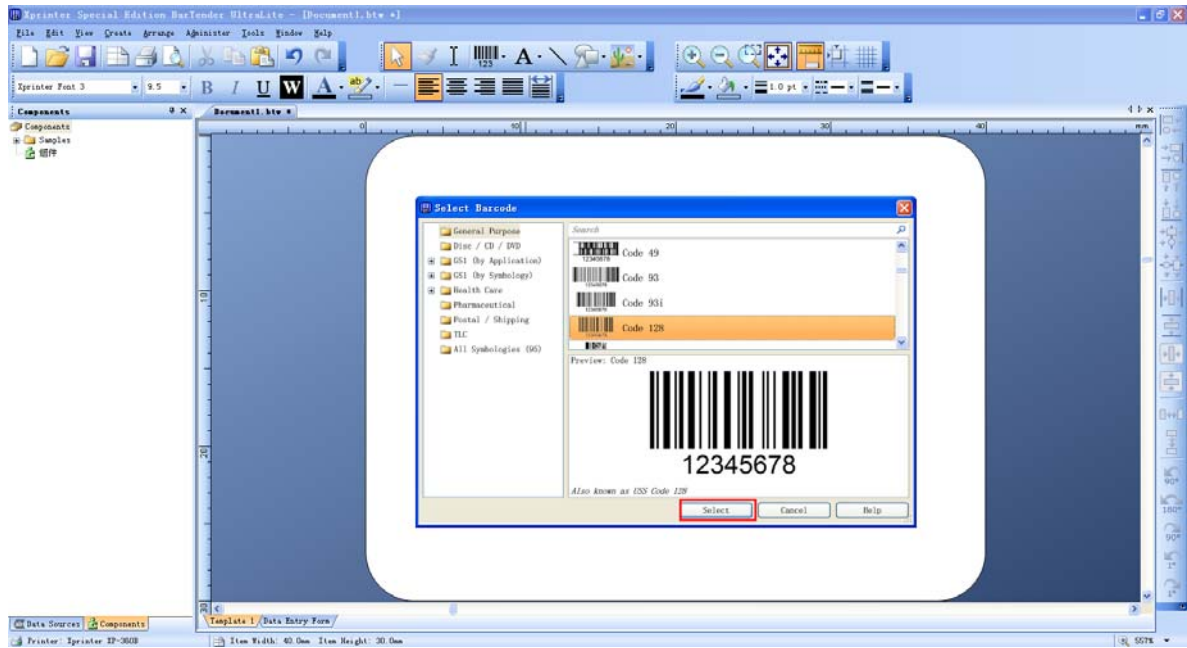
③ **.text:** font type, size, alignment

④ **.line and shape:** size, filling

7. Text presentation:

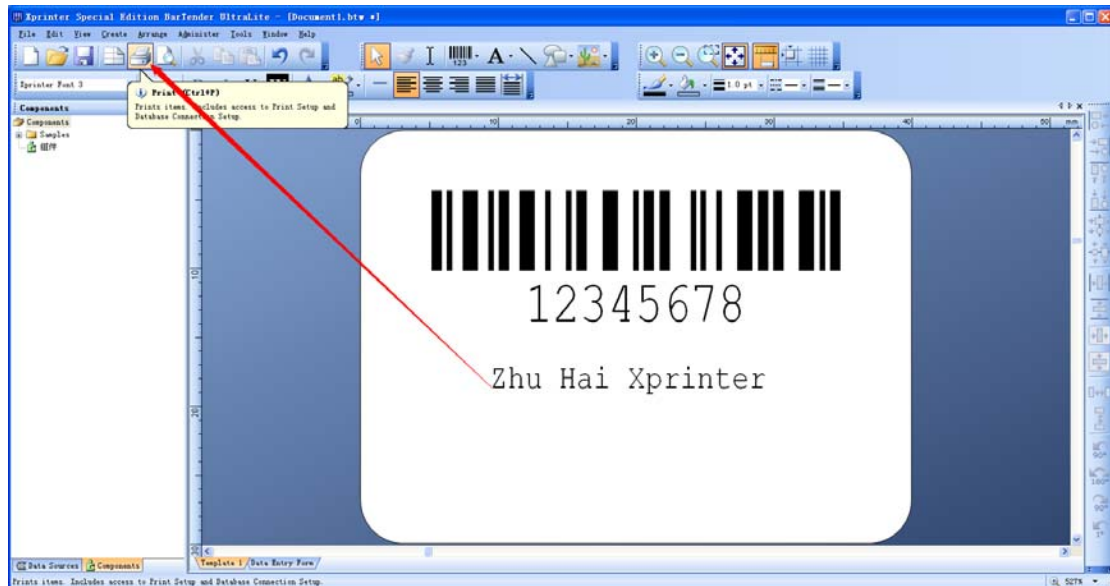
7.1: click barcode to choose

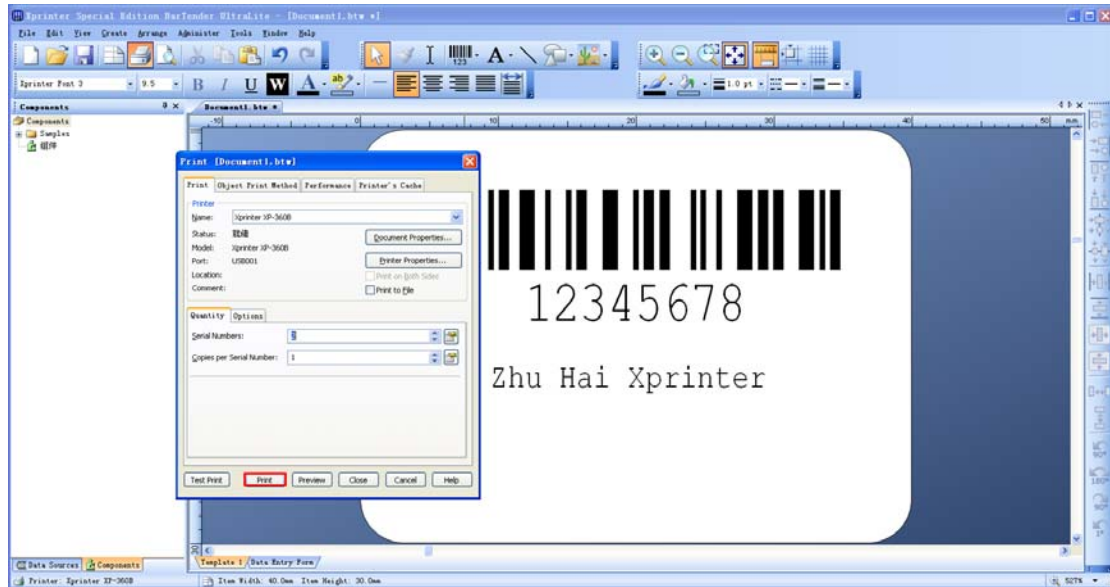






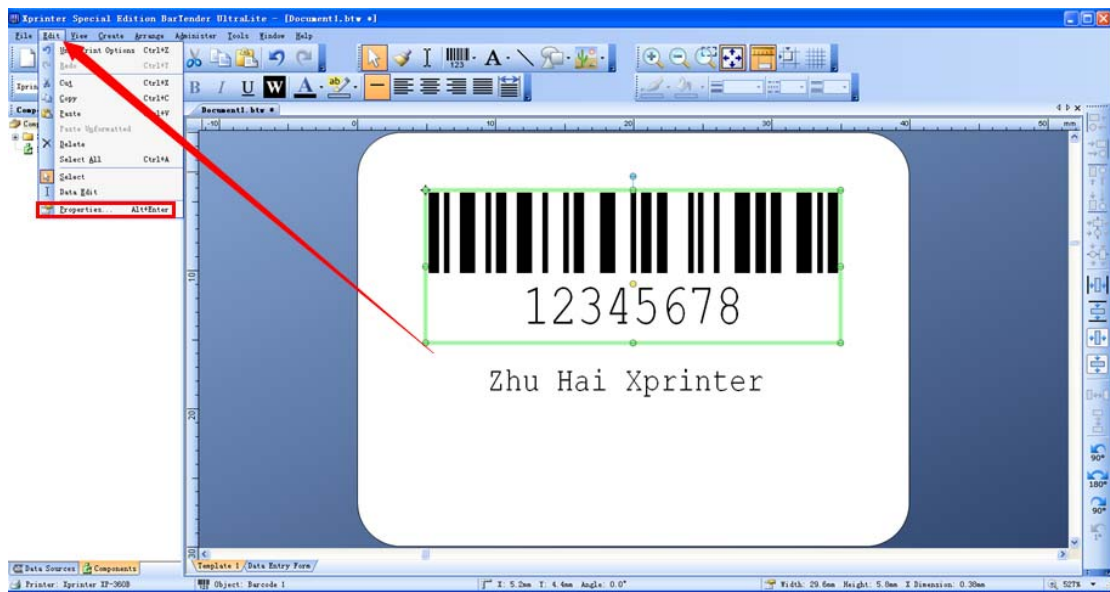
7.2: print the barcode



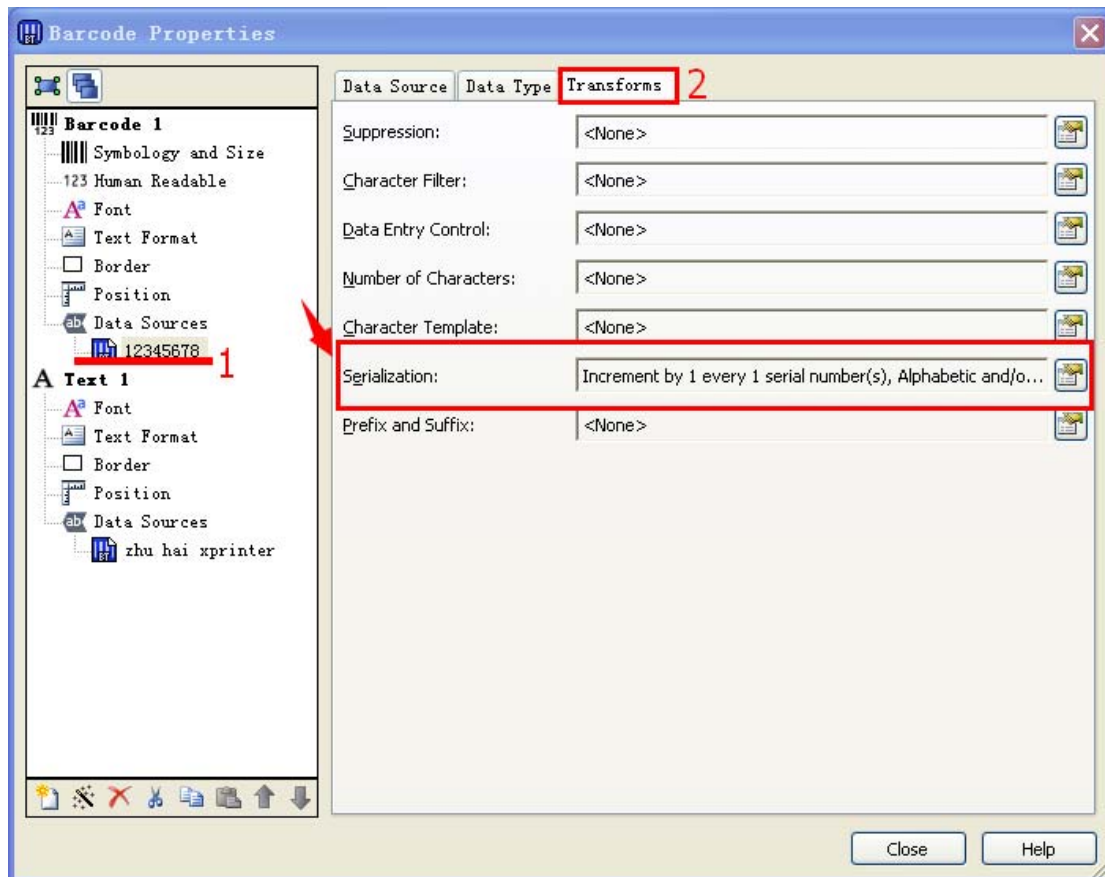


8. Print barcode:

8.1: Select target barcode-edit-properties



8.2: Select data source-transforms-barcode



Serialization

Serialization Reset

☐ Don't Serialize ☒ Increment ☐ Decrement

Method: Alphabetic and/or Numeric

Letters: Uppercase A-Z

☐ Preserve the number of characters

Increment by: 1

When to Increment

Event: Standard (the "Serial Numbers" setting below sets event frequency)

Event interval: 1

Print Quantity

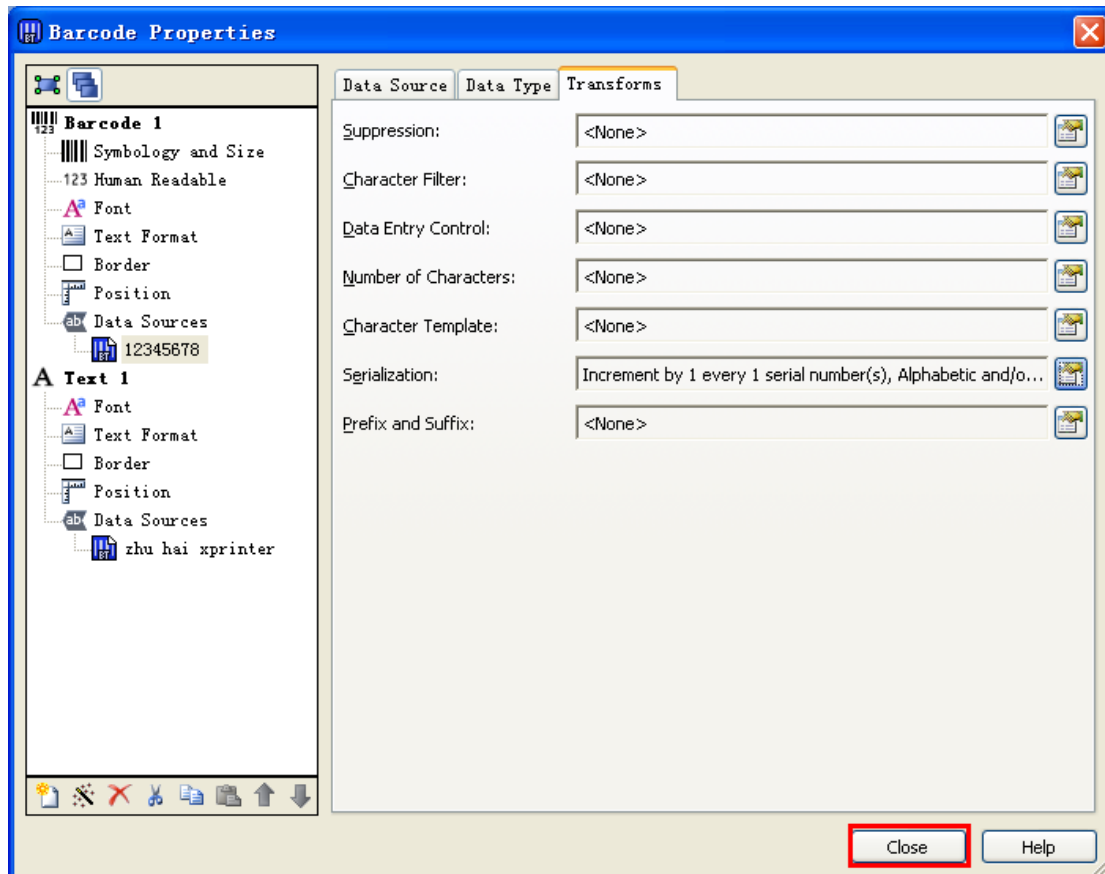
These controls are global and can also be set from the Print Dialog.

Serial Numbers: 1

Copies per Serial Number: 1

Preview Sequence...

OK Cancel Help



8.3: Select print-number of serial no

